

**Public Health  
Open House  
2019-2020**

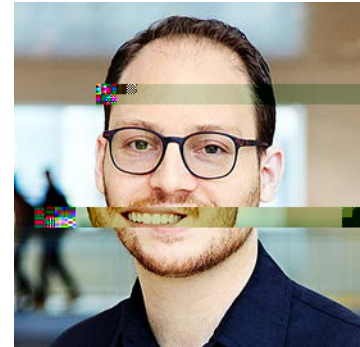
**Agenda**

- 2:00 PM      **Introduction**  
Dr. Timothy Evans  
Director, McGill School of Population and Global Health
- 2:05 PM      **3-minute mini-oral student presentations**  
Moderator: Dr. Catherine Hankins, McGill MScPH Program
- 2:35 PM      **Keynote speaker**  
Dr. Steven Hoffman , Global Strategy Lab  
Global Legal Epidemiology: A new field where international  
law and public health intersect
- 3:20 PM      **Pause santé**
- 3:45 PM      **3-minute mini-oral student presentations**  
Moderator: Dr. Catherine Hankins, McGill MScPH Program
- 4:15 PM      **Panel discussion**  
Frontiers in Global Public Health  
Moderator: Dr. Timothy Evans  
**Panelists:**  
Dr. Enis Baris: Anti-Microbial Resistance  
Dr. Donald Redelmeier: Road Traffic Injuries  
Dr. Lynnette Neufeld: Nutrition Transitions  
Dr. Miriam Shuchman: ma

# KEYNOTE SPEAKER

Steven J. Hoffman

Dr. Steven J. Hoffman JD PhD LLD is the Director of the [Global Strategy Lab](#) and a Professor of Global Health, Law, and Political Science at York University. He holds courtesy appointments as a Professor of Clinical Epidemiology & Biostatistics (Part-Time) at [McMaster University](#) and Adjunct Professor of Global Health & Population at [Harvard University](#), and, for the 2018-2019 academic year, as a Visiting Fellow at the [University of Oxford](#). He is an international lawyer licensed in both Ontario and New York who specializes in global health law, global governance and institutional design. His research integrates analytical, empirical and big data approaches to craft global regulatory strategies that better address transnational health threats, social inequalities and human rights challenges.



# KEYNOTE PRESENTATION

Dr. Steven J. Hoffman

**Global Legal Epidemiology: A field where international law and public health intersect**

New treaties have often been proposed to address many global health issues, including chronic diseases, nutrition, research and development, and healthcare corruption. With so many calls for treaties, it is imperative that a closer look is taken at their potential effectiveness and value for the future. The Global Strategy Lab are pioneering new approaches for evaluating existing treaties and informing the design of future international instruments through their global legal epidemiology research stream.

1. To develop the field of global legal epidemiology and demonstrate the value of bringing epidemiological methods to the study of global governance
2. To discuss the applications of global legal epidemiology by focusing on two examples: a systematic review and a quasi-experimental design
3. To bring attention to the benefits of interdisciplinary research for improving public health around the world

# PANEL DISCUSSION

Frontiers in Global Public Health

## PANELISTS

Dr. Enis Baris

**Anti-Microbial Resistance**

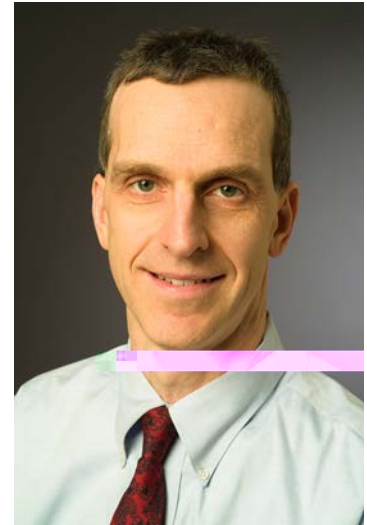
Dr. Enis Baris is a medical doctor with graduate degrees in Public Health (M.Sc.) and Epidemiology (Ph.D.) and a wide range of

## Dr. Donald A. Redelmeier

### Road Traffic Injuries

Dr. Redelmeier received his MD degree from University of Toronto, completed postgraduate training in Internal Medicine at Stanford University, and obtained a Masters degree in Health Services Research as a Robert Wood Johnson Scholar at Stanford University. His research spans a variety of areas emphasizing the psychology of decision making and the epidemiology of motor vehicle trauma.

Dr. Redelmeier has published over 250 articles in the scientific medical literature. Some of his notable discoveries include "Association between cellular-telephone calls and motor vehicle collisions" (N Engl J Med, 1997), "Driving fatalities on Super Bowl Sunday" (N Engl J Med, 2003), and "Physician warnings for unfit drivers and the risk of trauma from a road crash" (N Engl J Med, 2012).



## Dr. Lynnette M. Neufeld

### Nutrition Transitions

Dr. Lynnette M. Neufeld strives to mobilize intellectual resources to improve the health and nutrition of populations, using strategic research to inform better program design and implementation. Dr. Neufeld is actively involved in the global nutrition community, serving on several boards and technical advisory groups and President Elect of the International Union of Nutritional Sciences. Currently part of Senior Management at the Global Alliance for Improved Nutrition (GAIN), where she leads a team dedicated to research, evaluation, and knowledge mobilization. Dr. Neufeld was Director of the Division of Nutritional Epidemiology at the National Institute of Public Health (INSP) in Mexico. Dr. Neufeld has an active research and program evaluations portfolio in several countries in Asia and Africa. She is Adjunct Professor in the Rollins School of Public Health at Emory University and Visiting Professor at INSP.



# STUDENT ORAL PRESENTATIONS

First Group:    2:05 p.m.

- Demy Dam    National Surveillance to Assess the Burden of Tuberculosis in Canada in 2018
- Aashna Uppal    Social and behavioural risk factor reduction strategies for tuberculosis prevention in Inuit communities: a cost-effectiveness analysis
- William Pardoe    Exploring the association between dating app usage and sexual behaviour at risk for STBBI transmission among gay and bisexual men who have sex with men (GBM) in Montréal
- Natalee Hung    Measuring Sexual Violence in the UK: Questionnaire Development for a Nationwide Survey
- Alanna Miller    Exploring Service Delivery Models for Nova Scotia Health Authority's Community Mental Health and Addictions Program

Second Group:    3:45 p.m.

- Katarina Vukovojac    A microsimulation model to forecast the characteristics of people living with cystic fibrosis using Canadian patient registry data
- Miraal Mavalvala    Assessing the Economic Impact of the Yellow Fever Outbreak in Brazil 2016-2019
- Marshall Lloyd    Land Use Regression Models of Ambient Black Carbon in Montreal and Toronto
- Stephanie Toigo    Hepatitis C Screening and Linkage to Care Among the Pakistani Community in Montreal
- Jill Hannah    Assessment of Trends and Possible Determinants of iGAS in Eeyou Istchee

# STUDENT POSTER PRESENTATIONS

Abraham Abood

Kelsey Adams

Naïm Afeich

Chelsea Almadin

Afia Amoako

Zharmaine Ante

Rajshree Balaji

Karanveer Banipal

Christina Chavenet

Holly Cochrane

Demy Dam

Srishity Dhesi

Maria El Bizri

Mariam El Sheikh

Claire Gapare

Renatha Giramahoro

Jillian Hannah

Natalee Hung

Katherine Jennings

Nabeela Jivraj

Sabeena Jalal Khan

Carla Kuhn

Miraal Mavalvala

Jagger Mercer-Adams

Katherine Milbers

Alanna Miller

Faheel Naeem

Ornella Noubissie Wafo

William Pardoe

Samiha Rahman

Gabriel Ramirez

Rhiannon Roberts

Eugenie Samson

Brannon Senger

Sandip Shergill

Dayana Shublaq

Soumyadipta Roy

Mathew Thomson

Stephanie Toigo

Moyandi Udugama

Aashna Uppal

Katarina Vukovojac

Marcus Wong

Mercedes Yaneslal

